



jordan fishwick

WITHINGTON



, Withington, M20 3BG

£2,318 Per Calendar Month



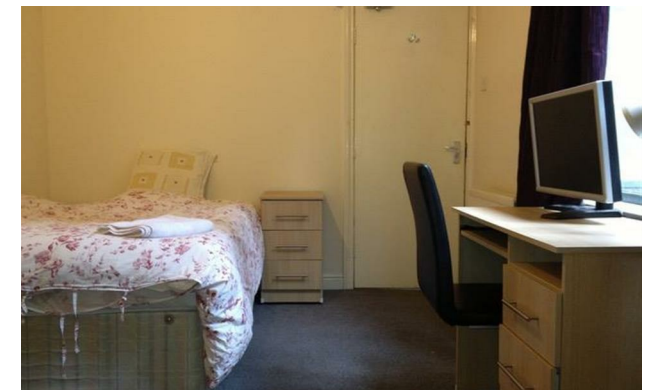
The Property

*** AVAILABLE 1st JULY 2026 *** £145.00 PPPW + £100.00 PPPW ***
BILLS PACKAGE AVAILABLE *** Located in the heart of Withington Village on Wilmslow Road this four bedroom apartment is perfectly positioned for bus routes, bars and shops. The property benefits from an open plan living area, modern fitted kitchen, three large double bedrooms, further smaller fourth room and shower room. Each bedroom is fully furnished with a double bed, wardrobe, desk and chest of drawers. Viewings highly recommended! Nearby street parking only. More photos coming soon, Contact our Didsbury office to arrange a viewing

EPC Rating D // Council Tax Band B

Directions

M20 3BG



- Available 1st July 2026
- £145.00 & £100.00 PPPW
- Four Bedrooms (One Single)
- Student Apartment
- Furnished
- Central Withington Location
- Walking Distance to all Amenities
- Bills Package Available
- Council Tax Band B
- EPC Rating D

Postcode - M20 3BG

EPC Rating - D

Floor Area - sq ft

Local Authority - Manchester

Council Tax - B





These particulars are believed to be accurate but they are not guaranteed and do not form a contract. Neither Jordan Fishwick nor the vendor or lessor accept any responsibility in respect of these particulars, which are not intended to be statements or representations of fact and any intending purchaser or lessee must satisfy himself by inspection or otherwise as to the correctness of each of the statements contained in these particulars. Any floorplans on this brochure are for illustrative purposes only and are not necessarily to scale.

Offices also at: Wilmslow, Macclesfield, Hale, Sale, Chorlton, Glossop, Manchester & Salford

757-759 Wilmslow Road, Didsbury Village, Manchester

0161 445 4480

didsbury@jordanfishwick.co.uk
www.jordanfishwick.co.uk